



THE REMIT AND STRUCTURE OF EPA TRUST

CONTENTS

INTRODUCTION: OUR SCHOOLS	1
VISION AND VALUES	1
CHARITABLE OBJECTS OF THE TRUST	2
MEMBERS AND DIRECTORS	3
COMMITTEES OF THE TRUST BOARD	4
FURTHER INFORMATION:	5

INTRODUCTION: OUR SCHOOLS

The Eynsham Partnership Academy (EPA Trust) was founded in 2014 to build a family of schools dedicated to high academic achievement and developing well-rounded children, providing the best possible learning environment for all young people in our communities and for those outside of our communities who choose to attend the member schools. Eynsham Partnership Academy is made up of ten schools, eight are primary schools, one an all-through school and one a secondary school in the west and north areas of Oxfordshire. There are eight Church Schools. Each school has its own Local Governing Body and Chair of Governors.

- Bartholomew School
- Eynsham Community Primary School
- Standlake Church of England Primary School
- Stanton Harcourt C of E Primary School
- Hanborough Manor Church of England Primary School
- Freeland Church of England Primary School
- St Peter’s Church of England Primary School, Cassington
- Heyford Park School, Upper Heyford
- Fritwell Church of England Primary School
- Cropredy Church of England Primary School

VISION AND VALUES

Each school is committed to working together to generate excellence in their education provision. To this end, the Strategic Leadership Group of all the school’s headteachers works collaboratively to design and create a strategic development plan that aligns with the values and vision of the trust.

Our Vision

ASPIRATION



We are ambitious for our schools and students. We believe there is no ceiling on what can be achieved by anyone.

COLLABORATION

We are committed to working together to provide a supportive and inclusive learning experience that enables everyone to fulfil their potential.

EXCELLENCE

Through aspiration and collaboration, we will provide the highest standards of care and educational provision; giving students the best preparation for their future lives.

Our Values

- We value everyone equally.
- We listen and treat people fairly.
- We are optimistic and enthusiastic.
- We are generous and share ideas.
- We work with care, integrity and openness.

We believe in...

- Putting children first.
- Working together to achieve more.
- Enabling everyone to flourish professionally, academically, creatively, morally, spiritually.
- Giving our best and leading by example.
- Growing school communities where character matters.
- Engaging with the world beyond the school gates.
- Empowering and developing others in supporting, challenging and learning from each other.
- Providing development opportunities so that colleagues are well-trained, skilful and motivated professionals.
- Celebrating our successes and learning from our mistakes.

The involvement of the Oxford Diocesan Board of Education as a corporate member ensures that the trust is an inclusive partnership that preserves and develops the different characteristics of each school, allowing the schools to work together, regardless of their religious designation, in mutual support and collaboration.

CHARITABLE OBJECTS OF THE TRUST

The Company's objects are specifically limited to the following:

- a) To advance for the public benefit education in the United Kingdom, in particular but without prejudice to the generality of the foregoing by establishing, maintaining, carrying on, managing and developing Academies which shall offer a broad and balanced curriculum and which shall include:
 - (i) Academies other than those designated Church of England, whether with or without a designated religious character; and



(ii) Church of England Academies designated as such which shall be conducted in accordance with the principles, practices and tenets of the Church of England both generally and in particular in relation to arranging for religious education and daily acts of worship, and in having regard to any advice and following any directives issued by the Diocesan Board of Education,

but in relation to each of the Academies to recognise and support their individual ethos, whether or not designated Church of England; and

- b) to promote for the benefit of the inhabitants of the areas served by the Academies the provision of facilities for recreation or other leisure time occupation of individuals who have need of such facilities by reason of their youth, age, infirmity or disablement, financial hardship or social and economic circumstances or for the public at large in the interests of social welfare and with the object of improving the condition of life of the said inhabitants.

MEMBERS AND DIRECTORS

The Members' powers are set out in the trust's articles of association and in company law. The Members will assure themselves that the governance of the Trust is effective, and that Trustees are acting in accordance with the Trust's charitable objectives.

The Members

The core roles, accountabilities and responsibilities of the Members of the Eynsham Partnership Academy (EPA) are to:

- undertake any and all roles, accountabilities and responsibilities as outlined in the articles of association and memorandum of Understanding of the EPA;
- be, and take on the role of, the 'owners' of the company;
- appoint the directors in accordance with the articles of association
- remove when appropriate, and in accordance with the articles of association of the EPA, Directors from their position and replace them appropriately;
- monitor the strategic actions of the company and thereby oversee the achievement of the objectives of the company;
- take part in annual and extraordinary general meetings of the EPA;
- receive the company's audited annual report and accounts in a timely fashion
- have the right to amend the articles of association when deemed appropriate and necessary;
- hold the members' liability which is limited to £10;
- undertake all of the above by holding Members' meetings throughout the year as appropriate.

The Board of Directors (Trust Board)

The trust is a legal entity and the employer of any central and academy staff. It has responsibility for the health and safety of those staff, pupils and any visitors. The trust board has collective accountability and responsibility for the trust on behalf of the members.

The board has collective accountability and strategic responsibility for the trust. It has a focus on ensuring the trust delivers an excellent education to pupils while maintaining effective financial managements and must ensure compliance with:



- The trust's charitable objects
- Regulatory, contractual and statutory requirements
- The Master Funding Agreement and any supplementary funding agreements.

The main responsibilities include:

- ensuring that grants from the DfE are used only for the purposes intended;
- approval of the annual budget;
- appointment of the Accounting Officer;
- appointment of the Chief Financial Officer, in conjunction with the Accounting Officer.

It also has strategic and statutory responsibility for Safeguarding and Special Educational Needs and Disabilities

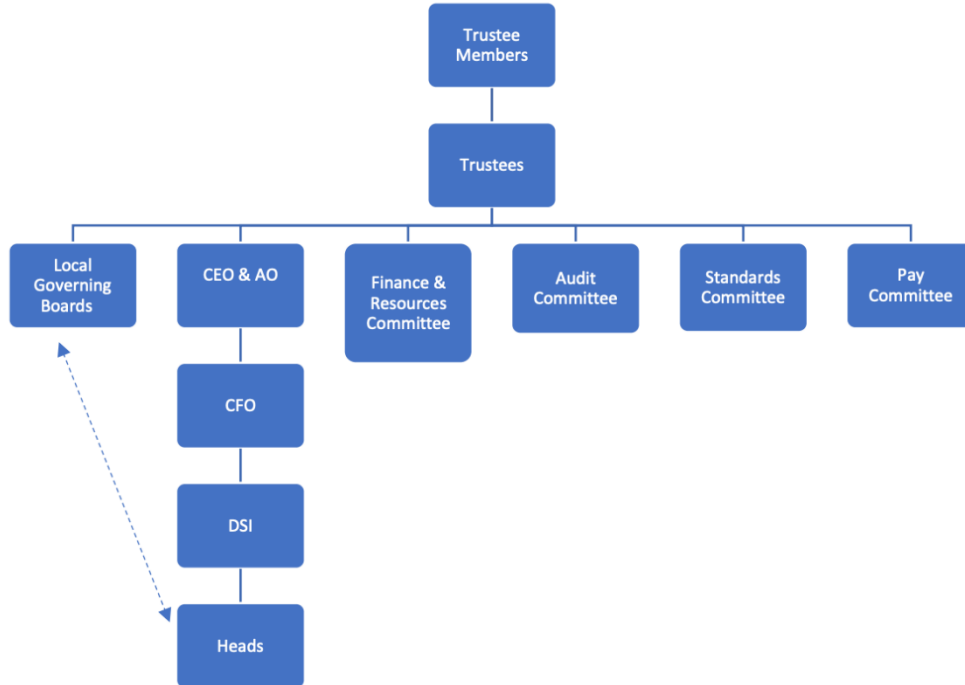
The Board of Directors is ultimately responsible for the proper stewardship of academy's funds and for ensuring economy, efficiency and effectiveness in their use – the three key elements of value for money. It must also ensure that it uses its discretions reasonably and takes in to account any and all relevant guidance on accountability and propriety.

COMMITTEES OF THE TRUST BOARD

The following committees have been established as Committees of the Trust Board:

- Standards Committee
- Audit and Risk Committee
- Finance and Resources Committee
- Pay Committee

Eynsham Partnership Academy Members, Trustees, Committees, Local Governing Bodies and Senior Executive Structure:



FURTHER INFORMATION:

See our Members and Trustees details pages (under Governance) for the current names of Members and Trustees their terms of office and declarations of interest along with the names of the Chairs of the Trust Committees).

The Local Governing Bodies, their Chairs, terms of office and declarations of interest are on the individual school website pages under the school’s governance sections.

See the Trust’s Scheme of Delegation which sets out the structure and delegation remit of the trust's members, trust board and committees including Local Governing Bodies.